

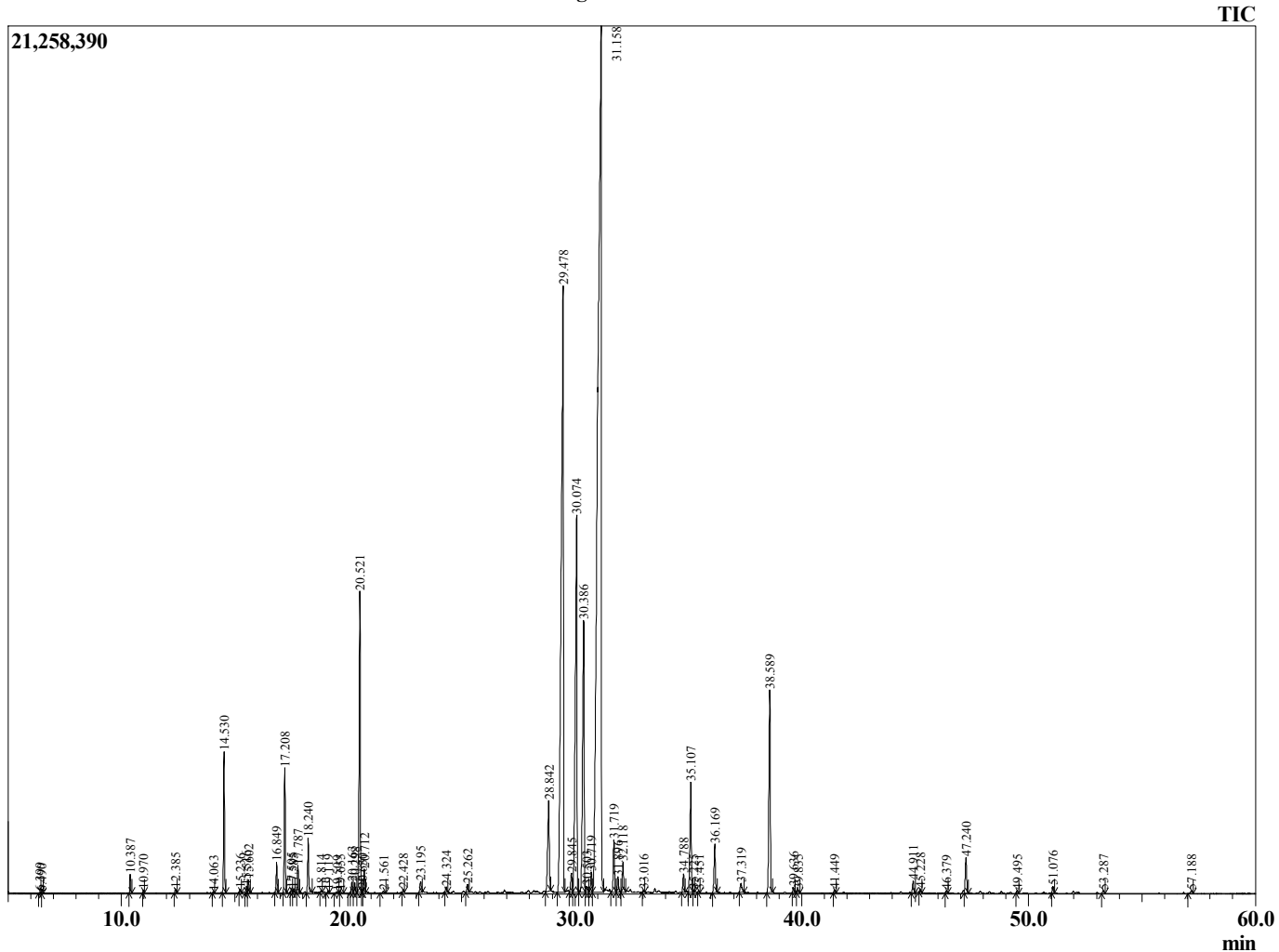
Sample Information

Sample Type : Essential Oil
 Sample Name : Mentha arvensis



Cornmint
 Lot# IDE9-EW
 Country: India

Chromatogram Mentha arvensis



R.Time	Name	Area%
6.399	1-Butanol, 3-methyl-	0.01
6.490	1-Butanol, 2-methyl-	0.01
10.387	Hexenol <3Z>	0.20
10.970	Hexanol <n>	0.03
12.385	Furan, 2,5-diethyltetrahydro-	0.05
14.063	Thujene <alpha->	0.02
14.530	Pinene <alpha->	1.86
15.236	Cyclohexanol, 3-methyl-	0.04
15.516	Camphene	0.09
15.602	Cyclohexanone, 3-methyl-	0.18
16.849	Sabinene	0.41
17.208	Pinene <beta->	1.82
17.505	3-Octanone	0.04
17.585	Menthene <3-p>	0.04
17.787	Myrcene	0.36
18.240	3-Octanol	0.78
18.814	Pseudolimonene	0.03
19.119	3-Carene	0.04
19.509	Cineole <1,4->	0.02
19.655	Terpinene <alpha->	0.03
20.163	Cymene <para>	0.16
20.298	Hexanol <2-ethyl->	0.14
20.521	Limonene	4.96
20.630	Phellandrene <beta>	0.04
20.712	1,8-Cineole	0.35
21.561	Ocimene <(E)-, beta->	0.03
22.428	Terpinene <gamma>	0.05
23.195	1-Octanol	0.21
24.324	Terpinolene	0.10
25.262	Linalool	0.13
28.842	Isopulegol <iso>	1.99
29.478	Menthone	18.43
29.845	Lavandulol	0.35
30.074	Menthone <iso>	8.68
30.386	Menthol <neo>	5.74
30.503	1-Nonanol	0.14
30.719	Isopulegone <trans>	0.36
31.158	Menthol	41.55
31.719	Menthol <iso>	0.92
31.896	Menthol <neoiso>	0.28
32.118	Terpineol <alpha>	0.57
33.016	Octyl acetate	0.03
34.788	Isovalerate <3-hexenyl->	0.30
35.107	Pulegone	2.11
35.225	Butanoate <hexyl-, 3-methyl->	0.03
35.451	Carvone	0.03
36.169	Piperitone	0.87
37.319	1-Decanol	0.21
38.589	Menthyl acetate	3.78
39.636	Neomenthol acetate	0.09
39.835	Isopulegyl acetate	0.05
41.449	Elemene <delta>	0.05
44.911	Bourbonene <beta>	0.21
45.228	Elemene <beta>	0.05
46.379	Decyl acetate	0.04
47.240	Caryophyllene <trans>	0.62

R.Time	Name	Area%
49.495	Humulene <alpha>	0.05
51.076	Germacrene D	0.11
53.287	Cadinene <delta->	0.05
57.188	Caryophyllene oxide	0.07
		100.00